



Institute of Agriculture and Natural Resources — AT WORK FOR NEBRASKA

September 2008

From the Vice Chancellor

What's your vision for Nebraska?

When you look down the years, what do you see?

We've been thinking about that a great deal lately in the Institute of Agriculture and Natural Resources as we've worked with faculty, staff, students, and stakeholders to put together our new strategic plan. The IANR vision and mission driving our plan is this:

"The Institute of Agriculture and Natural Resources serves Nebraska by providing internationally recognized science and education to assure the state's competitiveness in a changing world.

"To fulfill this vision with its firm focus on Nebraska, we must achieve world-class excellence in: the life sciences, ranging from molecular to global systems; sustainable food, fiber, and natural resource systems that support a bio-based economy; economics and environments for a sustainable future; and human capital development of children, youth, and families.

"We do that by: advancing knowledge along the continuum from fundamental research to application and education necessary to meet the current and emerging needs of the state; preparing professionals for the future; creating and implementing solutions to critical problems; expanding partnerships across UNL, the NU system, and beyond; cultivating public-private partnerships. In short, we fulfill our mission by being at work for Nebraska."

We know wise people build on their strengths, and agriculture, natural resources, families, and communities are huge Nebraska strengths. We expect IANR will lead in providing knowledge and education needed for Nebraska to grow, and grow, and grow these strengths. We expect recognition and stewardship of Nebraska's abundant and precious natural resources will increase. We expect individuals, families, and communities of all sizes will thrive in our state. Not just survive — thrive.

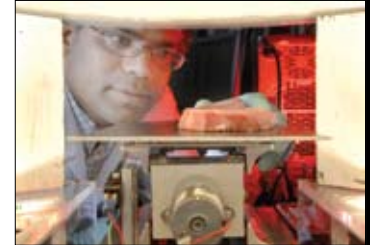
IANR's strategic plan reflects the University of Nebraska's strategic planning framework as we go about our land-grant university mission, being at work for Nebraska.

John Owens
NU Vice President and
Harlan Vice Chancellor, IANR



Love me tender

In a food lab at UNL, a researcher is honing a technique to predict steak tenderness in the packing plant long before the meat ends up on a plate. Someday, this technology could allow retailers to charge a premium for a "guaranteed tender" label.



For more information, atworkfornebraskanewsletter.unl.edu/#tender

Exploring entrepreneurship

UNL Extension 4-H teaches youth how to succeed in business. While 4-H has long taught responsibility and recordkeeping, its new EntrepreneurShip Investigation (ESI) curriculum emphasizes economic development as a way to potentially keep youth in rural Nebraska by helping them become entrepreneurs. The ESI curriculum has been presented to nearly 500 middle school students statewide. Extension also plans to make it available to high school students.



For more information, atworkfornebraskanewsletter.unl.edu/#entrepreneurship

Fired up to kill weeds

Organic farmers someday may have a new tool to combat weeds in their fields. UNL researchers are experimenting with using propane-driven flamers, mounted on a four-wheeler that's driven down field rows, to destroy the pesky plants.



For more information, atworkfornebraskanewsletter.unl.edu/#weed

Extending Extension's knowledge

A national initiative taking “the best of the best” in unbiased, research-based information to the public has UNL Extension leading the way. *eXtension.org*, a partnership of 74 U.S. land-grant colleges and universities, launched nationally last February. Nebraska's leadership for the first areas of eXtension expertise are in horses, beef cattle, livestock and poultry environmental management, wildlife damage management and disaster education. By the end of 2008, eXtension expects to have information available on 26 topic areas.

For more information, atworkfornebraskanewsletter.unl.edu/#knowledge

A real buzzkill

Honeybees in the U.S. are on the decline — and that has far-reaching implications for agriculture since the insects play a critical role in



Powering students into jobs



Say “agricultural engineering” anywhere in the U.S. and you’ll likely hear “Nebraska Tractor Test Laboratory.” The lab is the official tractor testing station for the U.S., doing tests such as measuring drawbar horsepower, power takeoff capability and the amount of weight that hydraulics can bear. The lab tests about 25 tractors annually, with many tests overseen by its 8 or 10 student employees. This student job experience often leads to internships, which frequently lead to job offers right after — or even before — graduation.

For more information, atworkfornebraskanewsletter.unl.edu/#poweringstudents

pollination. UNL scientists are part of a multistate effort to try to solve the problem.

For more information, atworkfornebraskanewsletter.unl.edu/#buzzkill

Ranch Practicum practical help

UNL Extension's Ranch Practicum participants report saving thousands of dollars from knowledge learned. Extension specialists and educators teach producers the questions to ask to better monitor ranch production systems and to better understand the impacts of management decisions on the entire operation. One participant reported the practicum ideas “stood the test of time through bountiful and lean years.” Since 1999 practicum participants report

collectively managing more than 2.5 million acres of land and 192,099 head of cattle, saving an average of \$22.80 per head, for a cumulative impact of at least \$2.3 million.

For more information, atworkfornebraskanewsletter.unl.edu/#practicum

On this Web site, UNL is all wet

A new UNL Web site provides a gateway to a wide variety of UNL expertise on water issues. *Water.unl.edu* pulls together information from research and extension experts from a number of water-related disciplines to give Nebraskans convenient access to this important information.

For more information, atworkfornebraskanewsletter.unl.edu/#watersite